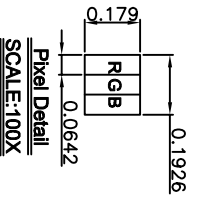
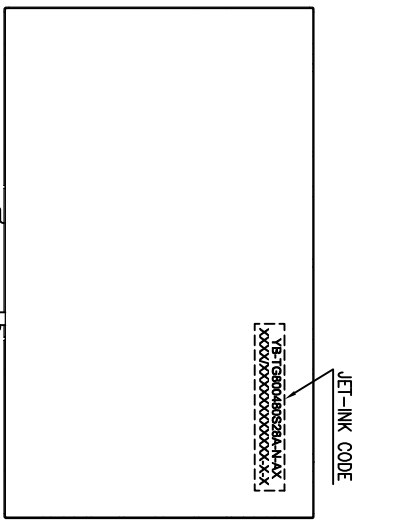
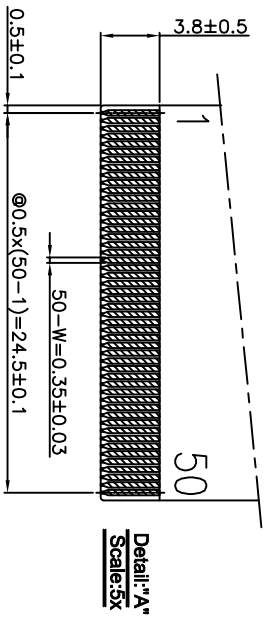
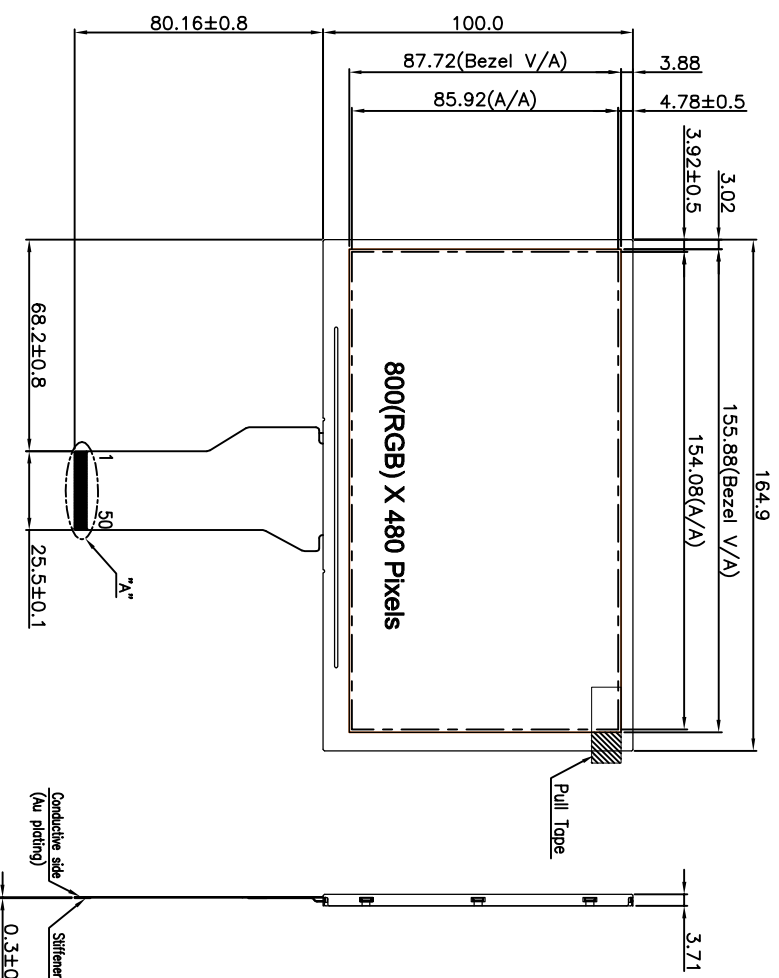


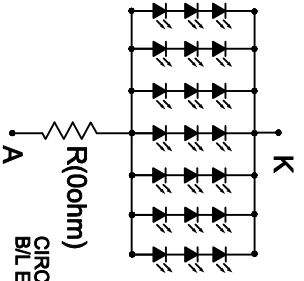
| Count drawing & Spec revision record during discussion with customer |                              |            |
|--|------------------------------|------------|
| Rec.   | Revision content description | Date       |
| #1   | FIRST ISSUE                  | 2016-08-24 |
| #2   | Modify FPC drawing           | 2016-10-11 |



**JET-INK CODE NOTES:**

YB-TG8000480S28A-N-AX — Yeabo P/N.  
 XXXXX/XXXXXXXXXXXXX-X  
 LOT NO. \_\_\_\_\_  
 Production Year and week \_\_\_\_\_

- Specification:**
1. Display mode: 7.0" TFT/ Transmissive/Normal white
  2. Color depth: 16.7M Colors
  3. Viewing Direction (Gray Inversion): 6 o'clock  
The Best Viewing Direction: 12 o'clock
  4. Operating temperature: -20°C to +70°C  
Storage temperature: -30°C to +80°C
  5. Backlight: LED White (x21)
  6. Controller IC: ST5091CA & ST5023CA or Compatible
  7. Unspecified tolerance: ±0.30mm.
  8. ROHS compliant



**CIRCUIT DIAGRAM**  
B/L Electrical Circuit

|       |   |           |                      |          |         |          |          |           |
|-------|---|-----------|----------------------|----------|---------|----------|----------|-----------|
|       |   | MOD. Name | YB-TG8000480S28A-N-A | DESIGNED | CHECKED | VERIFIED | APPROVED | FILE NAME |
|       |   | UNIT      | mm                   | SIZE     | A4      | SCALE    | N-T-S    | Count Dwg |
| Sheet | 1 | Of        | 1                    |          |         |          |          |           |

| NO. | SYMBOL    | LCD MODULE FPC PIN OUT |
|-----|-----------|------------------------|
| 1   | LED+      |                        |
| 2   | LED+      |                        |
| 3   | LED-      |                        |
| 4   | LED-      |                        |
| 5   | GND       |                        |
| 6   | VCOM      |                        |
| 7   | DVDD      |                        |
| 8   | MODE      |                        |
| 9   | DE        |                        |
| 10  | VSYNC     |                        |
| 11  | HSYNC     |                        |
| 12  | B7        |                        |
| 13  | B6        |                        |
| 14  | B5        |                        |
| 15  | B4        |                        |
| 16  | B3        |                        |
| 17  | B2        |                        |
| 18  | B1        |                        |
| 19  | B0        |                        |
| 20  | G7        |                        |
| 21  | G6        |                        |
| 22  | G5        |                        |
| 23  | G4        |                        |
| 24  | G3        |                        |
| 25  | G2        |                        |
| 26  | G1        |                        |
| 27  | G0        |                        |
| 28  | R7        |                        |
| 29  | R6        |                        |
| 30  | R5        |                        |
| 31  | R4        |                        |
| 32  | R3        |                        |
| 33  | R2        |                        |
| 34  | R1        |                        |
| 35  | R0        |                        |
| 36  | GND       |                        |
| 37  | DC/CLK    |                        |
| 38  | GND       |                        |
| 39  | LCD_LR    |                        |
| 40  | LCD_UD    |                        |
| 41  | VGH       |                        |
| 42  | VGL       |                        |
| 43  | AVDD      |                        |
| 44  | RST_LCD   |                        |
| 45  | NC        |                        |
| 46  | VCOM      |                        |
| 47  | LCD_DITHI |                        |
| 48  | GND       |                        |
| 49  | NC        |                        |
| 50  | NC        |                        |